

APPLICATION:

Weighbridges and silos

CAPACITY RANGE:

16t - 20t - 30t - 40t - 50t

MATERIAL:

Stainless Steel 17- 4 PH

ENVIRONMENTAL PROTECTION:

IP69-K

APPROVALS:

CE 3000 & 4500 Div - E.04.02.C04

OIML - R60/2000-ES1-13.03

CHARACTERISTICS

Construction using stainless steel. The laser soldered closing protects from the typical environment in food and chemical industry. To fulfil **IP69-K** sealing is essential that in the installation, the cable is protected with flexible pipe. Mounting compatibility.

OPTIONS

Length of the cable is optional.

ATEX option

EC-Type examination certificate

CEC 11 ATEX 040 X according

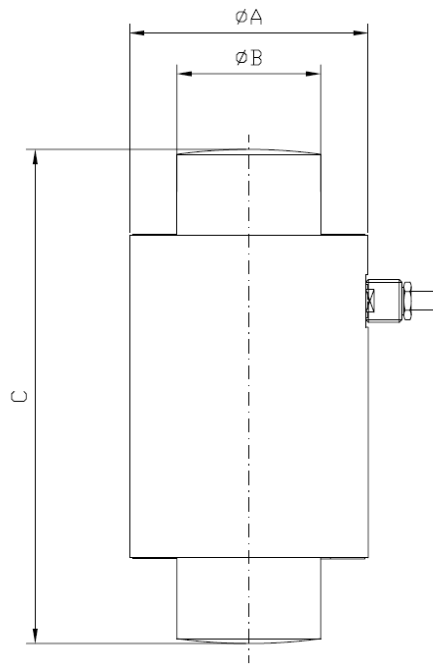
directive 94/9/EC

Ex II 1G EExia IIC T6 (Ta2-0÷+40°C)
TX (Ta-20÷+65°C)

Ex II 1D tD A20 TX°C (Ta-20÷+40°C)
TX°C (Ta-20÷+65°C)

For more information look up the EC-type examination certificate, and documentation.

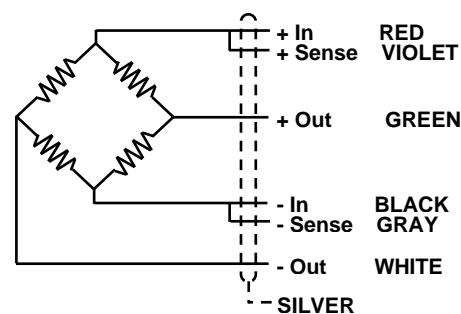
Consult for special requirements.



TEFLÓN® protects all the internal cables

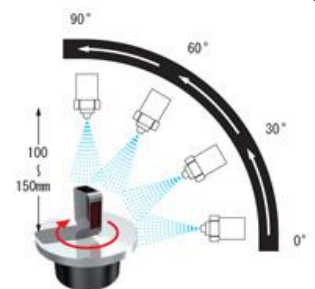
Capacidad	A	B	C
16 - 50T	73	44	750

Dimensions in mm



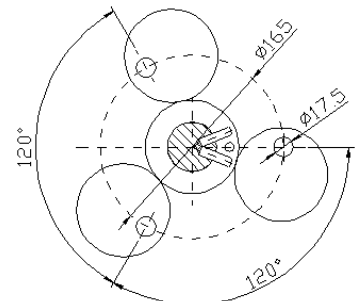
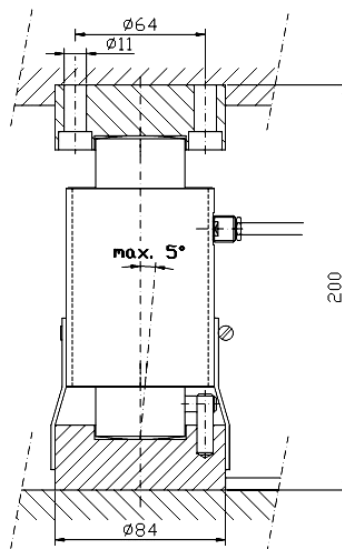
IP69-K: Test conditions

The standard DIN 40050-9 extends the IEC 60529 rating system with an IP69K rating for high-pressure, high-temperature wash-down applications. Such enclosures must not only be dust tight (IP6X), but also able to withstand high-pressure and steam cleaning. The test specifies a spray nozzle that is fed with 80°C water at 8–10 MPa (80–100 bar) and a flow rate of 14–16 L/min. The nozzle is held 10–15 cm from the tested device at angles of 0°, 30°, 60° and 90° for 30 s each. The test device sits on a turntable that rotates once every 12 s (5 rpm).



GENERAL TECHNICAL CHARACTERISTICS FOR $g = 9,8031 \text{ m/s}^2$

OIML Class	C3 - C4,5	UNITS
Divisions n_{LC}	3000 - 4500	
Minimum Dead load E_{min}	0	kg
$Z = E_{max} / 2DR$	3000 - 4500	
$Y = E_{max} / V_{min}$	10000	
Rated Capacity E_{max}	16000 - 20000 - 30000 - 40000 - 50000	kg
Rated Sensitivity C	$2 \pm 0,1 \%$	mV/V
Rated Input Voltage	10	V dc
Input Voltage Range	5...15	V ac/dc
Input Resistance R_{LC}	700 ± 10	Ω
Output Resistance	700 ± 10	Ω
Zero Balance	± 2	% E_{max}
Insulation Resistance at 50 V DC	> 5000	M Ω
Service Overload	> 150	% E_{max}
Overload Limit	> 300	% E_{max}
Temperature Range : Compensated	- 10 ... 40	$^{\circ}\text{C}$
: Operating	- 30 ... 85	$^{\circ}\text{C}$
: Storage	- 30 ... 90	$^{\circ}\text{C}$
Max. Nonlinearity	0,015	% E_{max}
Max. Hysteresis	0,015	% E_{max}
Max. No repeatability	0,01	% E_{max}
M Max. Creep in 4 hours	0,02	% E_{max}
Max. Zero Recovery Test in 1/2 hour	0,007	% E_{max}
Max Temperature effect : On Sensitivity	0,00097	% $E_{max} / ^{\circ}\text{C}$
: On Zero	0,00116	% $E_{max} / ^{\circ}\text{C}$
Weight	2221	g
Cable Length	15	m
Environmental Protection	IP69-K - DIN 40050-9	



ISO 9001

Made in EUROPE

www.ascellsensor.com
info@ascellsensor.com

Tel: (+34) 93 776 60 89
Fax: (+34) 93 775 14 72

These specifications are subjected to changes, due to continuous improvement of the design.

ft_en_cci-k_020821